



Perfect Amber Protein Ladder

Cat. No.	size
E3214-01	100 loadings

Storage Conditions:

- Stable for up to 2 weeks at 25 °C.
- Stable for up to 3 months at 4 °C.
- For long term storage, store at -20 °C.

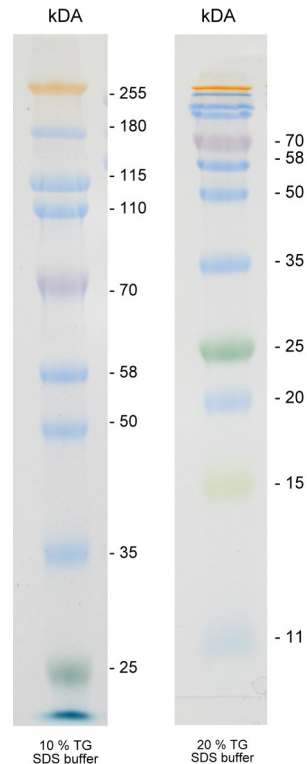
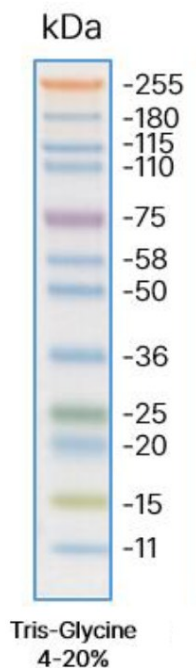
Prestained Protein Ladder, composed of precisely spaced recombinant bands, for sizing polypeptides ranging from 11 kDa to 255 kDa.

Description:

- The Perfect Amber Protein Ladder has twelve bands corresponding to protein size: 11, 15, 20, 25, 35, 50, 58, 75, 110, 115, 180, 255 kDa.
- The 15 kDa band is covalently coupled to a yellow dye, the 25 kDa band to a green dye, the 75 kDa band to a purple dye, and the 255 kDa band to an orange dye. The remaining bands are covalently coupled to a blue dye.
- Comes in a ready-to-use format.

Loading:

- Let Perfect Amber Protein Ladder adjust to room temperature before use. After thawing completely, mix them thoroughly.
- The recommended amount of size marker to load on a mini-gel is 3-5 µl per lane.



This product is developed, designed and sold exclusively for research purposes and in vitro use only.

EURx Ltd. 80-297 Gdańsk Poland ul. Przyrodników 3, NIP 957-07-05-191, KRS 0000202039
www.eurx.com.pl, orders@eurx.com.pl, tel. +48 58 524 06 97, fax +48 58 341 74 23